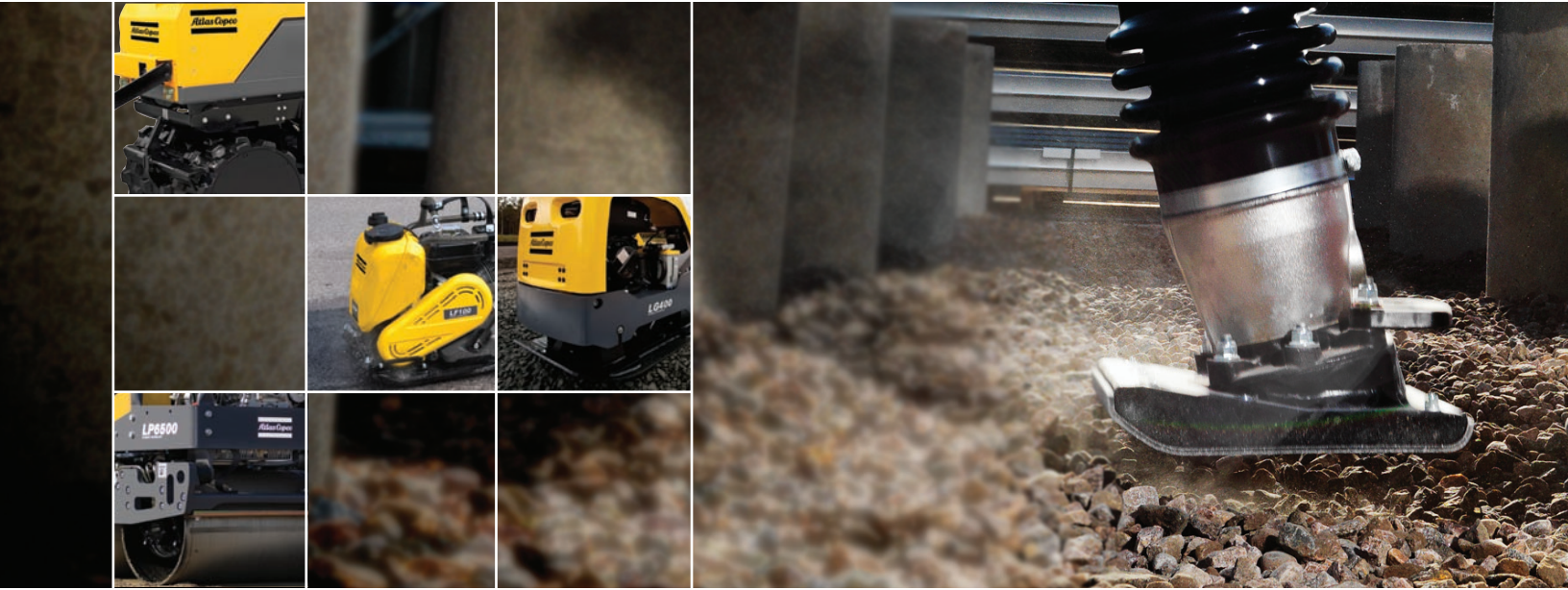


Atlas Copco | Light Compaction and Concrete Equipment



Sustainable Productivity





Duplex Roller

Specifications		LP6500	LP750
		Diesel Electric start	Diesel Electric start
Net mass	lb	1495	2159
Operating mass	lb	1579	2225
Frequency	vpm	3660	3780
Amplitude	in	0.018	0.020
Centrifugal force	lbf	4721.0	5620.2
Speed, forward/reverse	mph/h	197/125	197/197
H/A vibrations, standard handle	m/s ²	4	4
Sound power, guaranteed	dB(A)	107	109
Sound pressure at operators ear	dB(A)	90	90
Dimensions			
Drum diameter	in	16	20
Drum width	in	26	30
LxWxH	in	44x291x43/75 w/handle up	54x35x50/78 w/ handle up
Engine			
Model		Hatz	
Rated power, at 2600 rpm	hp	9	12
Part number		3382 0000 00	3382 0000 79

